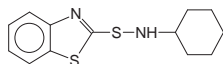


## CBS masterbatch

Nitrosamine-free sulfenamide accelerator

ACTIVE MATERIAL



N-cyclohexyl-2-  
benzothiazylsulfenamide  
C<sub>13</sub>H<sub>16</sub>N<sub>2</sub>S<sub>2</sub>  
M.W : 264  
CAS : 95-33-0  
EINECS : 202-411-2

### PROPERTIES :

Mixland<sup>®</sup>NEWGEN CBS masterbatch is a medium fast primary sulfenamide accelerator for NR, IR, BR and especially SBR, combining a fast cure with a delayed action.

Mixland<sup>®</sup>NEWGEN CBS masterbatch has the ability to provide fast efficient mixing of difficult, highly loaded carbon black reinforced compounds, without sacrificing scorch safety or physical properties. Its vulcanisates have good heat ageing and tear resistance.

Mixland<sup>®</sup>NEWGEN CBS masterbatch is used alone or can be boosted by small additions of other accelerators: thiurams or guanidines, to adjust and optimise the scorch / cure relationship for particular application conditions.

Mixland<sup>®</sup>NEWGEN CBS masterbatch shows a good dispersion and a high degree of processing safety. It allows prolonged and difficult high-temperature mixing and manufacturing processes to be carried out without problems due to scorch; yet at 135 -150° C it still produces a fast cure effect.

### APPLICATIONS :

Tyres, buffers, conveyor belting, seals, hose, profiles, footwear, cable sheathing, insulation, etc.

### TYPICAL VALUES :

Melting point : 97° C  
Purity : 97.0 %  
Specific gravity : 1.3

### REMARKS :

Slightly-discolouring,  
non-staining.

MASTERBATCH

PRODUCT	Active Content (%)	Colour <i>N for natural</i> <i>P for pigment</i>	Mooney ML(1+4) 80° <i>Typical value</i>	Density <i>Typical value</i>
CBS 80 G	80	Blue (P)	10	1.18

### SAFETY & TOXICITY:

For detailed information, please refer to our Material Safety Data Sheet.

### PACKAGING & STORAGE:

PE bags weight: 20 kg net-CP3 pallet: 640 kg net.

### Do not pile more than 2 pallets height

Shelf-life : 1 year in its original packaging

Store in a dry and cool place and away from direct sources of heat or sunlight.

### MIXLAND<sup>®</sup>NEWGEN masterbatch offers:

- Rapid mixing and good dispersion in a wide range of elastomers.
- Efficient use of chemicals.
- Short cleaning time.
- Long shelf-life time.
- Excellent working conditions: dust free products, suitable for automatic weighing and handling equipment, less skin contact for operators.
- Elimination of residual dust in packaging.

The information contained in this leaflet is based on tests carried out by our laboratories and data selected from the literature but shall in no event be held to constitute or imply any warranty or undertaking. No liability whatsoever can be accepted with regard to the handling, processing or use of the products concerned, which must in all cases be employed with regard to all relevant regulations and/or legislation in the country or countries concerned.

Issue 1 dated January 2014 © MLPC International

TECHNICAL DATA SHEET - MASTERBATCH NEWGEN CBS